

Clergy As Advocates

IMPLEMENTING THE OHIO DOMESTIC VIOLENCE PROTOCOL IN FAITH COMMUNITIES

PRESENTED BY: COLLEEN RICE, THE DOMESTIC VIOLENCE SHELTER

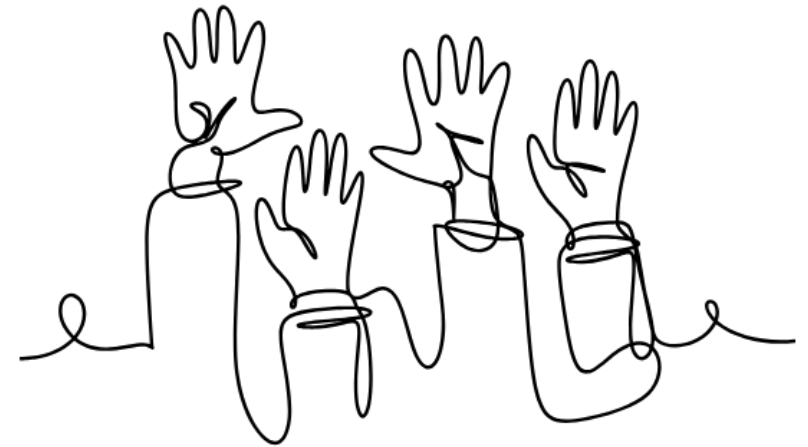


REDUCING VIOLENCE THROUGH PREVENTION, EDUCATION AND INTERVENTION

Introduction to the Protocol

► Overview:

- Addressing domestic violence is crucial for the health and safety of individuals in faith communities.
- The Ohio Domestic Violence Protocol provides guidelines for clergy to support victims effectively.



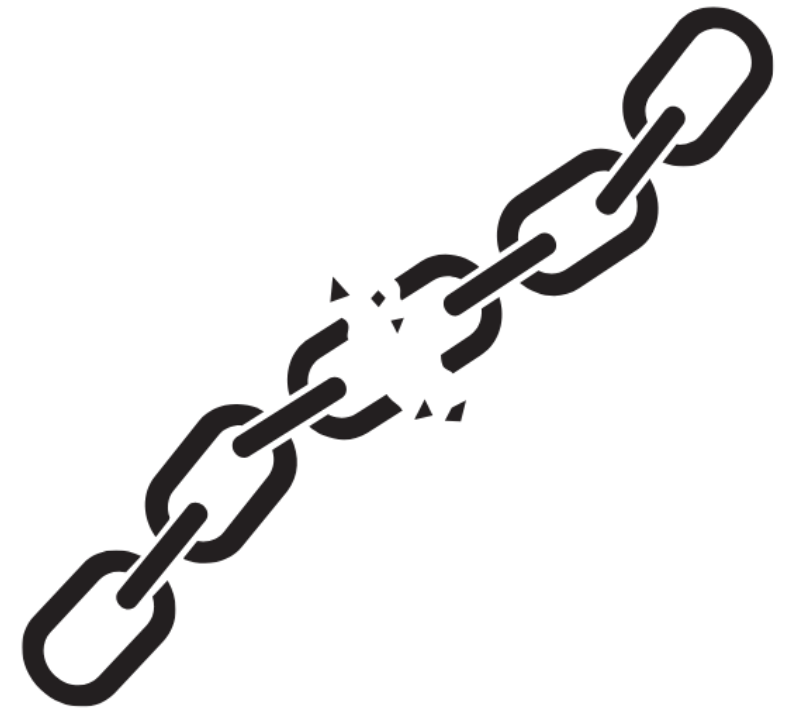
Significance in Faith Communities

- ▶ Faith leaders are often trusted figures within their communities, making us integral to offering spiritual and emotional support.
- ▶ By addressing domestic violence, we not only help individuals heal but also strengthen the fabric of our community.

Faith

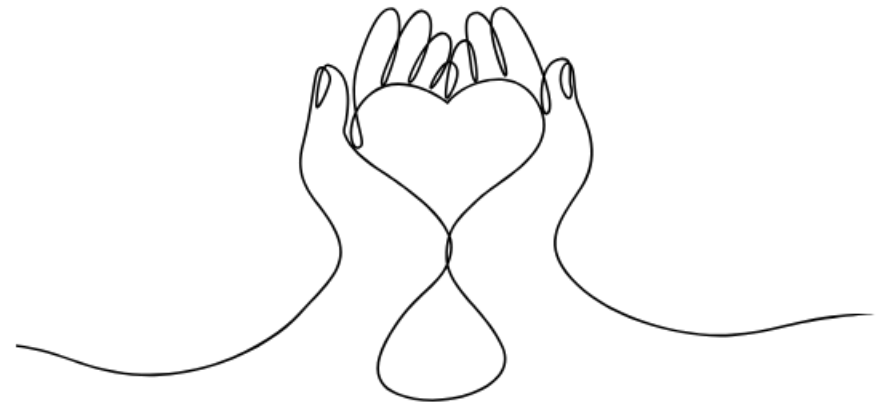
Purpose and Impact of Domestic Violence

- ▶ **Comprehensive Understanding:**
- ▶ Physical, emotional, financial, and health impacts.
- ▶ Long-term effects on individuals and families.



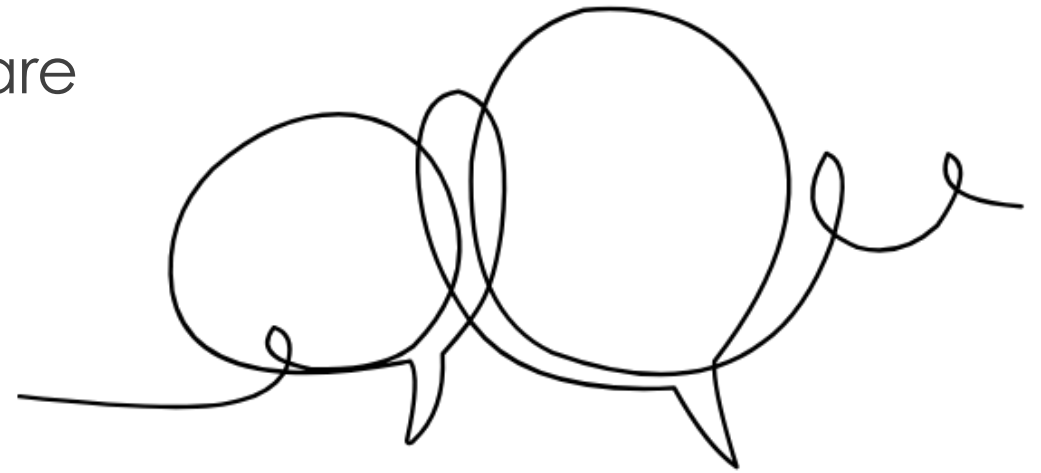
Importance of Clergy

- ▶ **Supportive Figures:**
- ▶ Clergy can provide a safe space for disclosure.
- ▶ Essential in guiding individuals to professional help and resources.



Screening for Domestic Violence

- ▶ **Implementation:**
- ▶ Universal screening in pastoral care settings.
- ▶ Conduct screenings privately to ensure confidentiality.



Communicating Routine Screening

- ▶ **Messaging:**
- ▶ Normalize the conversation: "We discuss this with everyone because it's common in our community."



Effective Questioning Techniques

- ▶ **Open-Ended Questions:**
- ▶ Ask about partner behavior without judgment.
- ▶ Explore various types of abuse: physical, verbal, emotional, and sexual.





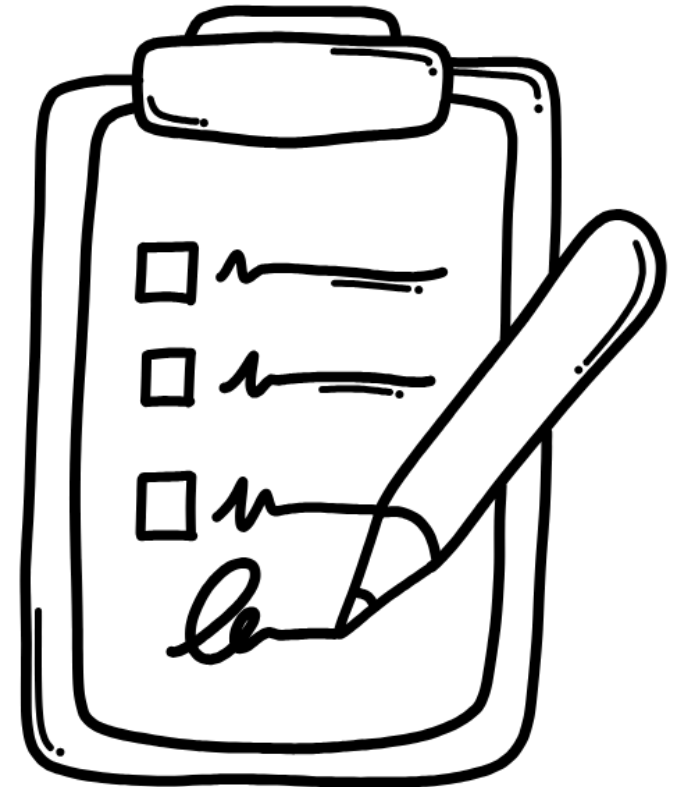
DOMESTIC ABUSE INTERVENTION PROGRAMS

202 East Superior Street
Duluth, Minnesota 55802
218-722-2781

www.theduluthmodel.org

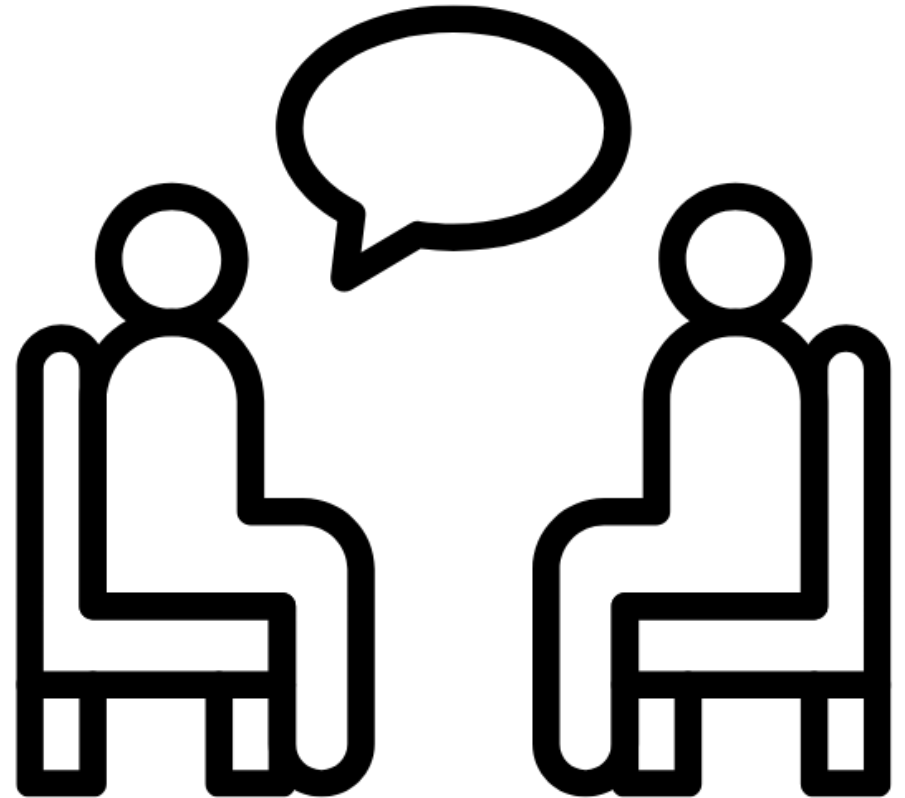
Assessment and Immediate Safety

- ▶ **Identifying Risks:**
- ▶ Recognize immediate danger signs and evaluate safety measures.
- ▶ Consider risks to children involved.



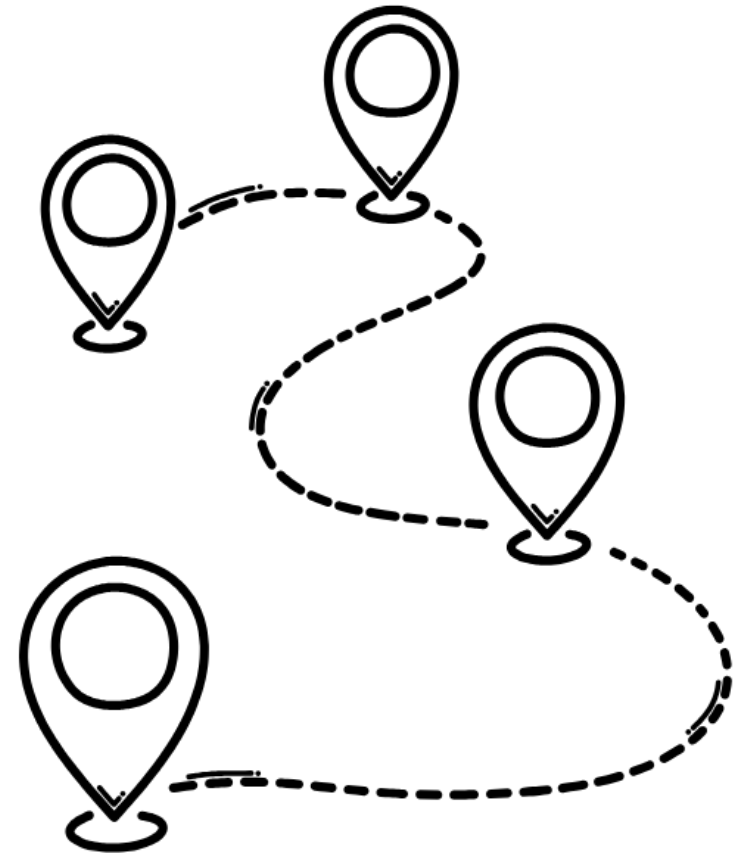
Intervention Strategies

- ▶ **Providing Reassurance:**
- ▶ Ensure confidentiality and explain legal obligations.
- ▶ Validate experiences and offer emotional support.



Facilitating Referrals

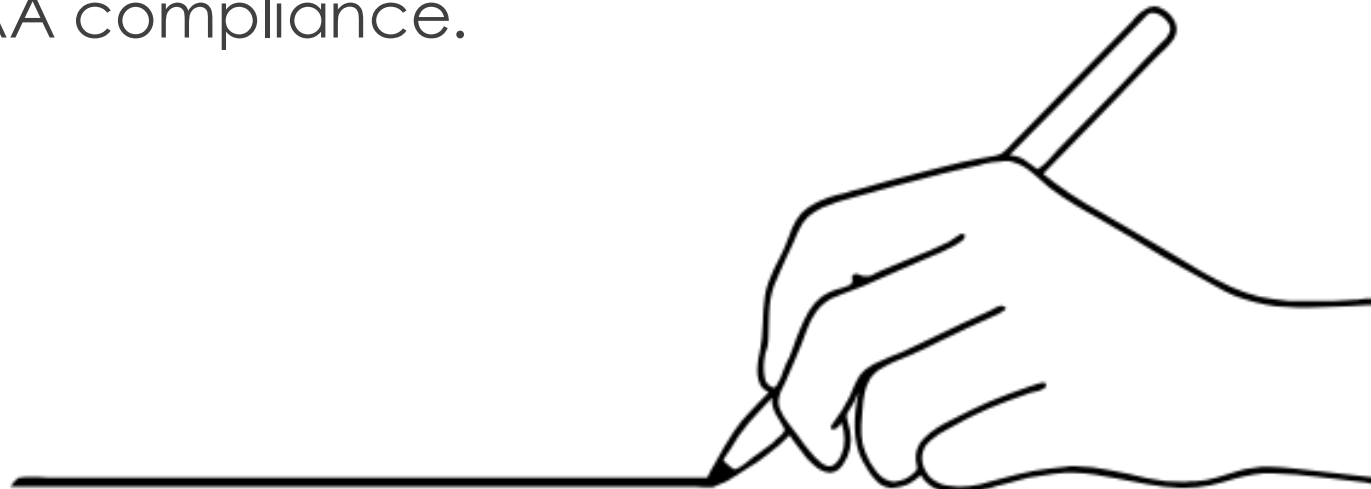
- ▶ **Connecting with Resources:**
- ▶ Assist in safety planning and refer to local support services.
- ▶ Provide information about community agencies.



Documentation and Legal Considerations

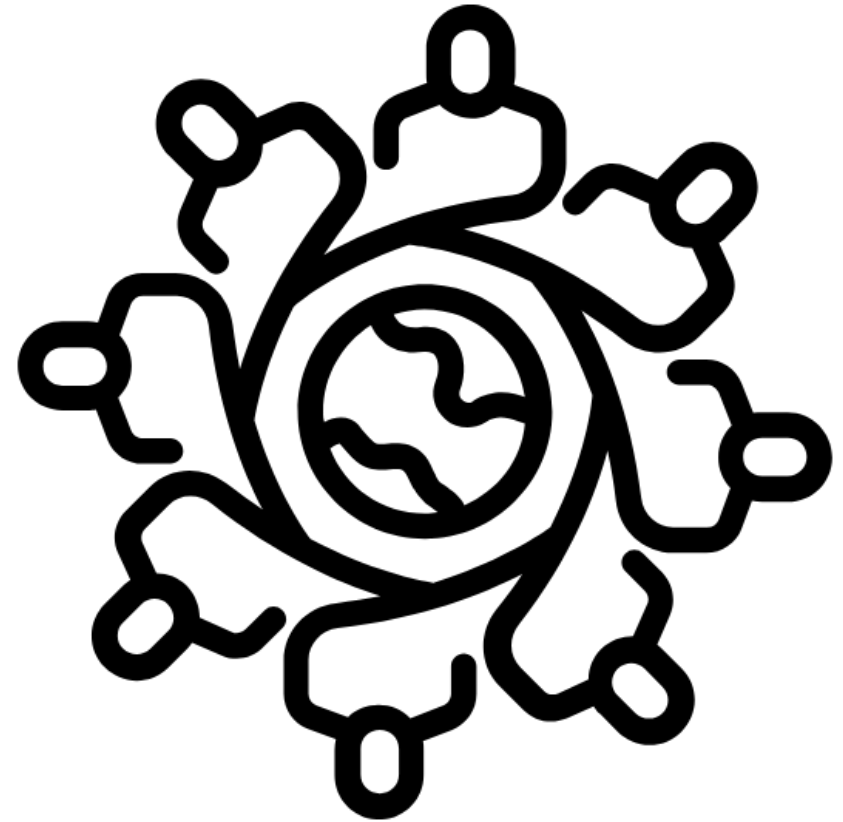
- ▶ **Accurate Recording:**

- ▶ Document observations and survivor statements carefully.
- ▶ Understand Ohio legal requirements (ORC 2919.25 and 2921.22) and HIPAA compliance.



Cultural Sensitivity and Support

- ▶ **Challenges for Marginalized Communities:**
- ▶ Recognize the unique barriers faced by different cultural groups.
- ▶ Use appropriate interpreters and adapt communication accordingly.



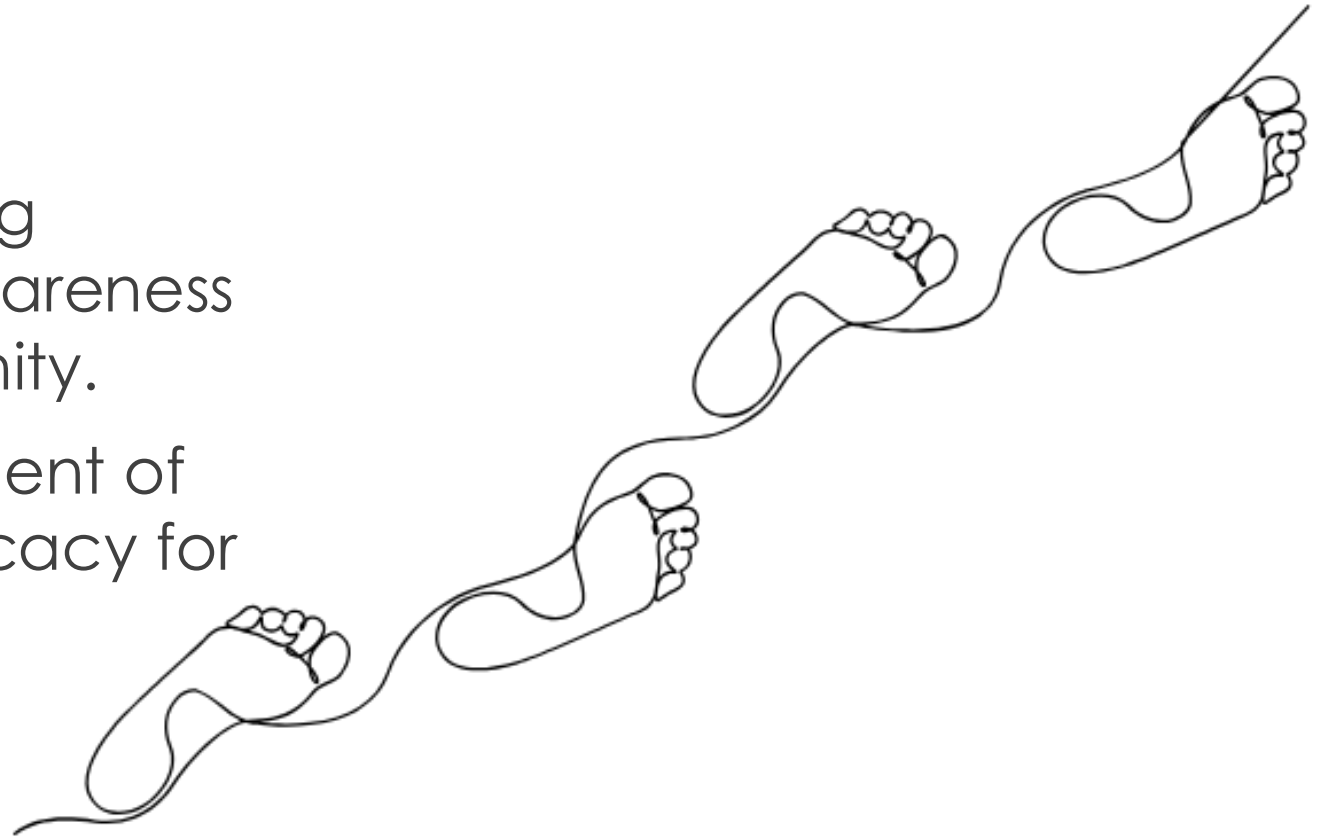
Developing Safety Plans

- ▶ **Crafting Personalized Plans:**
- ▶ Work with professional advocates to create tailored safety plans.
- ▶ Ensure access to necessary resources and establish follow-up protocols.



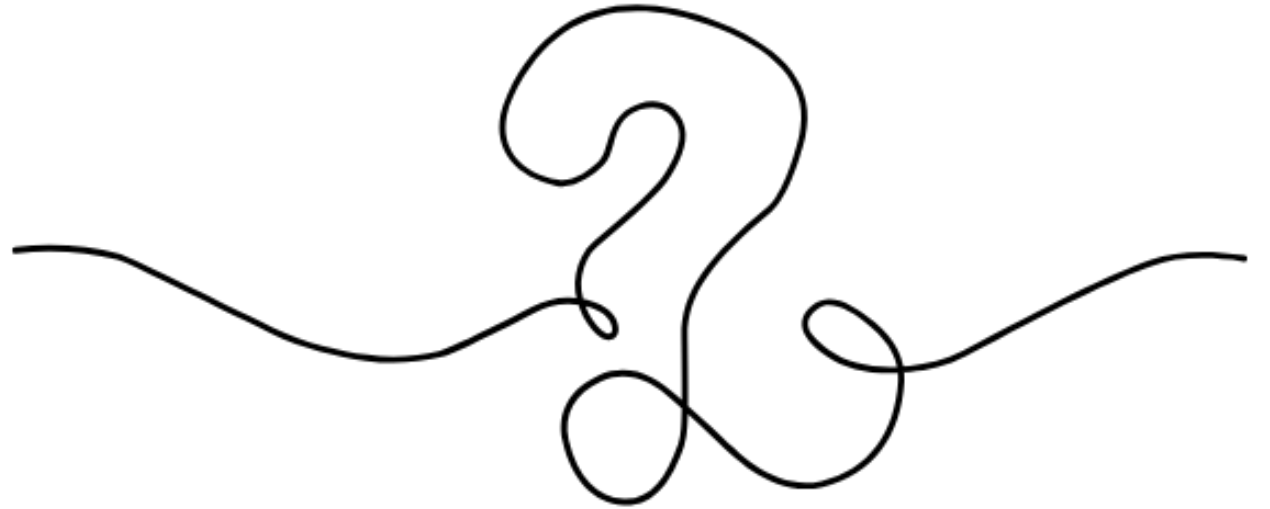
Looking Ahead

- ▶ **Next Steps:**
- ▶ Encourage ongoing education and awareness within the community.
- ▶ Foster an environment of support and advocacy for survivors.



Q&A

- ▶ **Discussion:**
- ▶ Questions and discussions.
- ▶ Sharing your thoughts and experiences.



Thank you!

- ▶ **Colleen Rice**
- ▶ crice@thedvshelter.com
- ▶ **419-774-5843 ext. 101**
- ▶ **24/7 hotline 419-774-5840**

Presentation Evaluation Survey

